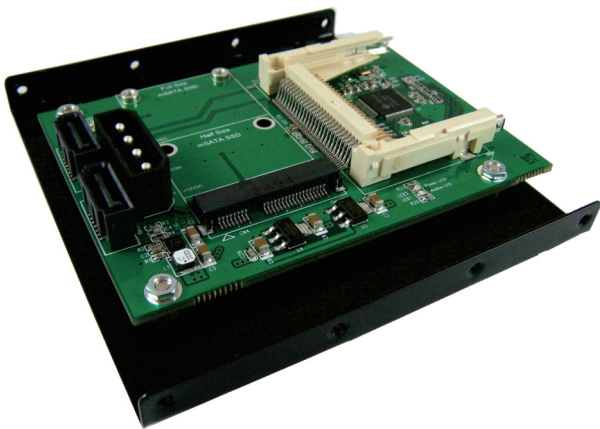


# SATA III to mSATA SSD & CF Card adapter



## Order Information

Part No.	S2094E
Description	SATA III to mSATA SSD & CF Card Adapter + 3.5" Frame Bracket

## Specifications

- Support SATA Reversion 3.2
- PCI Express Mini Card Electromechanical Spec. 1.2
- Data transfer rate: 6Gb/s bandwidth
- Operating temperature – Commercial (0°C to +70°C)
- PWM synchronous buck converter Power IC
  - 3A maximum output current
  - Short circuit protection
  - In-rush current suppression
  - Thermal shutdown protection
  - ESD HBM (Human Body Mode)/2KV
- Compliant with CF+ and CF Card Spec. Rev. 4.1
- Support ATA/ATAPI-7 specification.
- ATA/ATAPI Ultra DMA Mode 0, 1, 2, 3, 4, 5.
- ATA/ATAPI PIO Mode 0, 1, 2, 3, 4.

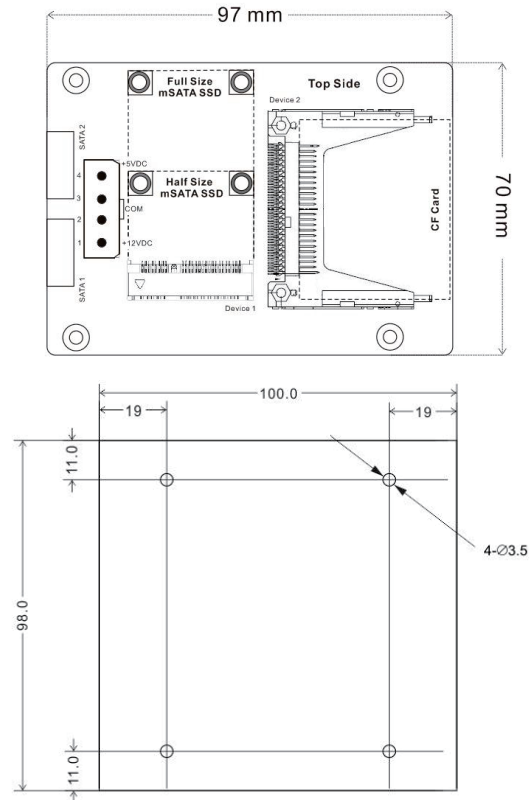
## Support mSATA SSD Form factor

- Half size mSATA : 26.8(L) x 30(W) (mm)
- Full size mSATA : 50.95(L) x 30(W)

## Support CF Card Form factor

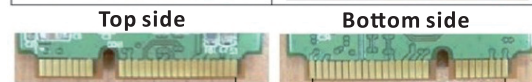
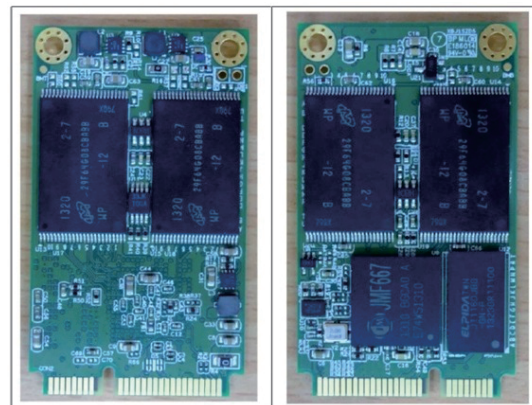
- Type 1 CF Card : 36.4(L) x 42.8(W) x 3.3 (H) (mm)
- Type 2 CF Card : 36.4(L) x 42.8(W) x 5(H)

## Dimensions (unit:mm)

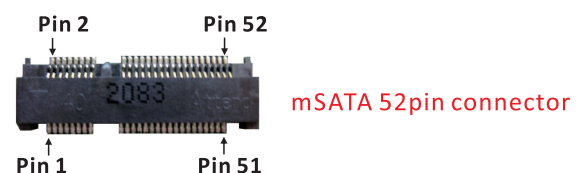


▲ 3.5" Frame Bracket

## mSATA 52pin golden finger



Device connector : mSATA 52pin golden finger



mSATA 52pin connector